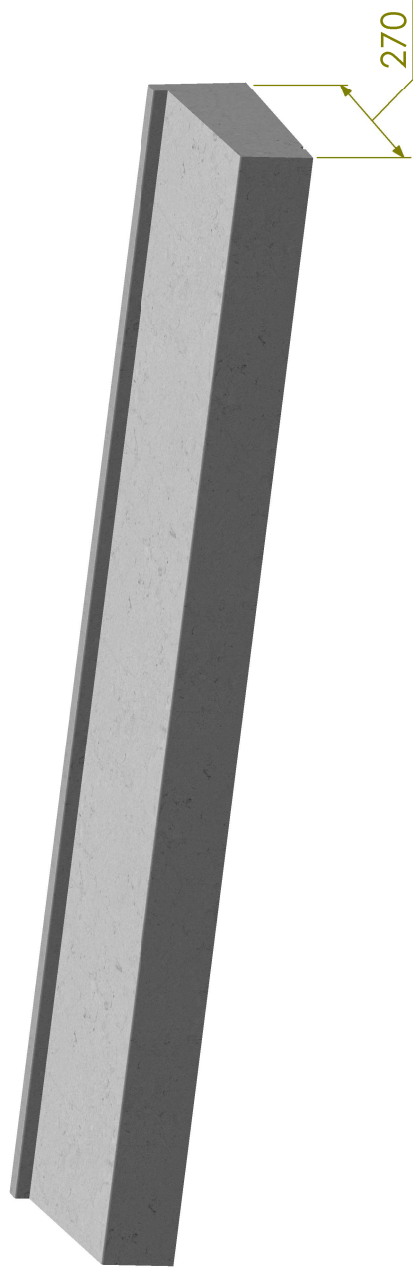
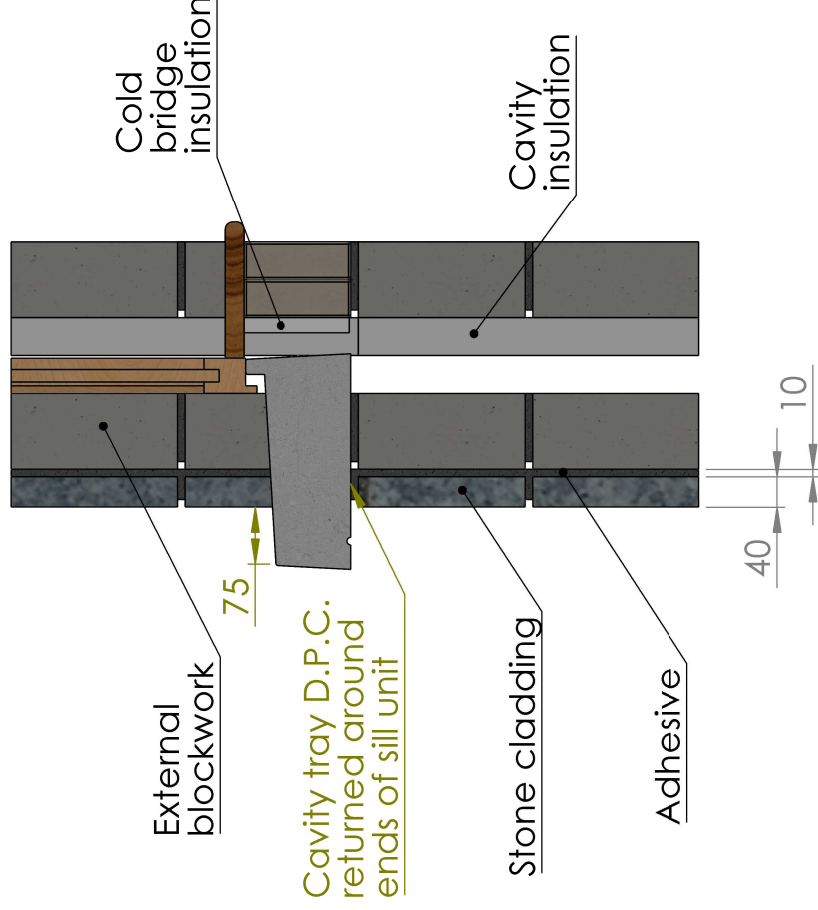
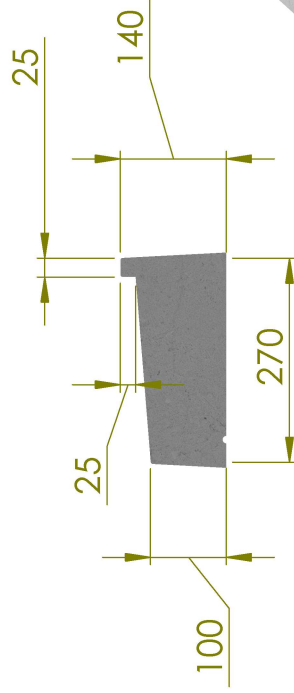




InGranite Recon Ltd.
Reconstituted Stone | Modern Material | Classic Style
UK info@ingranite.co.uk Rol info@ingranite.ie
www.ingranite.co.uk www.ingranite.ie
0808 2349118 057 9331462

Technical specification sheet

Title: Superwarm 270 wide sill	Date: 21/08/2018	Ref: SWN 270/...
Scale: 1:10	Drawn by: InGranite	
Approximate weight: 78kgs/metre		



All dimensions are in millimetres. For non listed sizes please contact InGranite Recon LTD.

All vertical faces typically have a 4mm taper per 100mm of height. The information contained in this drawing was correct at the time of going to print. Profiles, sizes and weights are given as indication only.